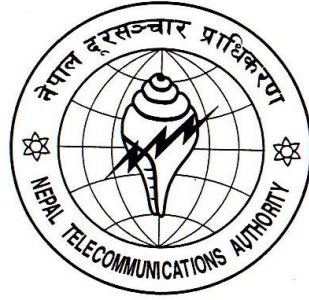


Nepal Telecommunications Authority



Management Information System

**Published on
Falgun, 2068 (February, 2012)**

**P.O. Box No. 9754
Bluestar Office Complex
Tripureshwor, Kathmandu, Nepal
Tel.: +977-1-43101030-38
Fax: +977-1-4101034
E-mail: ntra@nta.gov.np, info@nta.gov.np
URL: www.nta.gov.np**

1. Telecom Statistics at a glance (as of Poush, 2068, 14 January, 2012)

1.1 Available Voice Telephony Services

| Services Operators | Fixed | | Mobile | | Others | | Total |
|-----------------------|----------------|----------------|-------------------|----------------|----------------|--------------|---------------------------|
| | PSTN | WLL | GSM | CDMA | LMS | GMPCS | |
| NDCL | 616,368 | 151,867 | 5,742,687 | 853,346 | - | - | 7,364,268 |
| UTL | - | 71,129 | - | - | 526,195 | - | 597,324 |
| NCELL | - | - | 7,008,777 | - | - | - | 7,008,777 |
| STM | 5,177 | - | - | - | 155 | - | 5,332 |
| NSTPL | - | 2,585 | - | - | 133,922 | - | 136,507 |
| Smart | 598 | - | - | - | 212,630 | - | 213,228 |
| Others (GMPCS) | - | - | - | - | - | 1,742 | 1,742 |
| Total | 622,143 | 225,581 | 12,751,464 | 853,346 | 872,902 | 1,742 | 15,327,178 |
| | 847,724 | | 13,604,810 | | 874,644 | | |
| Tele-Density | | | | | | | |
| Services | | | | | | | Penetration Rate % |
| Fixed | | | | | | | 3.18 |
| Mobile | | | | | | | 51.10 |
| Others (LM, GMPCS) | | | | | | | 3.28 |
| Total | | | | | | | 57.56 |

Note: Projected Population for 2011 is 26,620,809 (Source : cbs.gov.np)

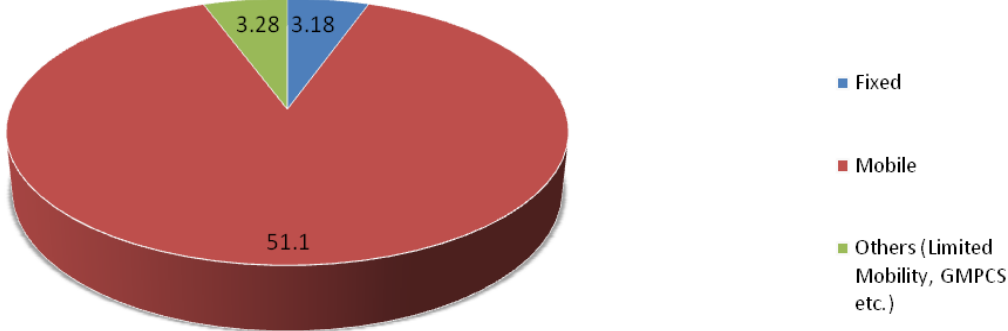
1.2 Data/Internet Services

| Services | Subscribers | | | | Total |
|--|------------------|---------------|------------------|---------------|------------------|
| | NDCL | UTL | NCELL | ISPs | |
| Dialup (PSTN +ISDN) | 5,383 | - | - | 14,188 | 19,571 |
| Wireless Modem, Optical Fibre Ethernet | - | - | - | 31,146 | 31,146 |
| Cable Modem, Cable etc. | - | - | - | 17,112 | 17,112 |
| ADSL | 78,390 | - | - | - | 78,390 |
| GPRS | 1,413,688 | - | 2,313,224 | - | 3,726,912 |
| CDMA 1X | 108,164 | 66,370 | - | - | 174,534 |
| Total | 1,605,625 | 66,370 | 2,313,224 | 62,446 | 4,047,665 |
| Internet Penetration Rate % | | | | | 15.20 |

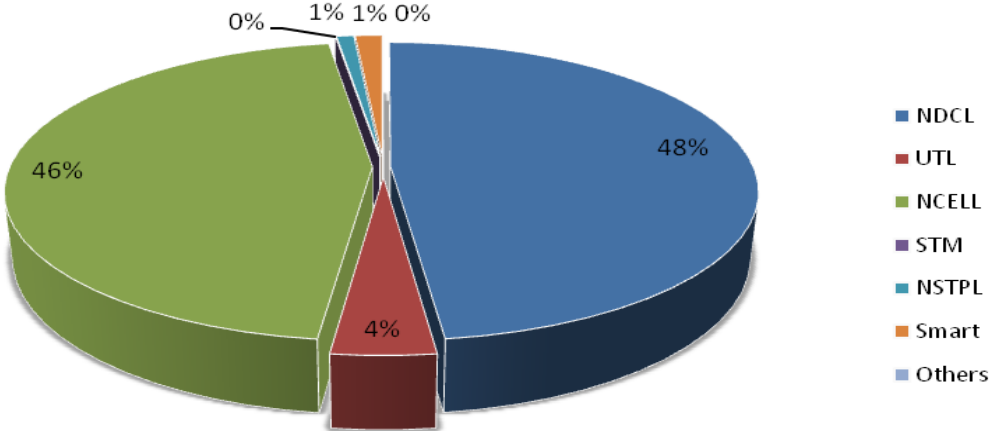
1.3 Public Call Centres (PCO)

| Services | Subscribers |
|--|--------------|
| Rural PCO's of STM Telecom Sanchar Pvt. Ltd. | 2,016 |
| Rural PCO's of SMART Telecom Pvt. Ltd. | 598 |
| Total | 2,614 |

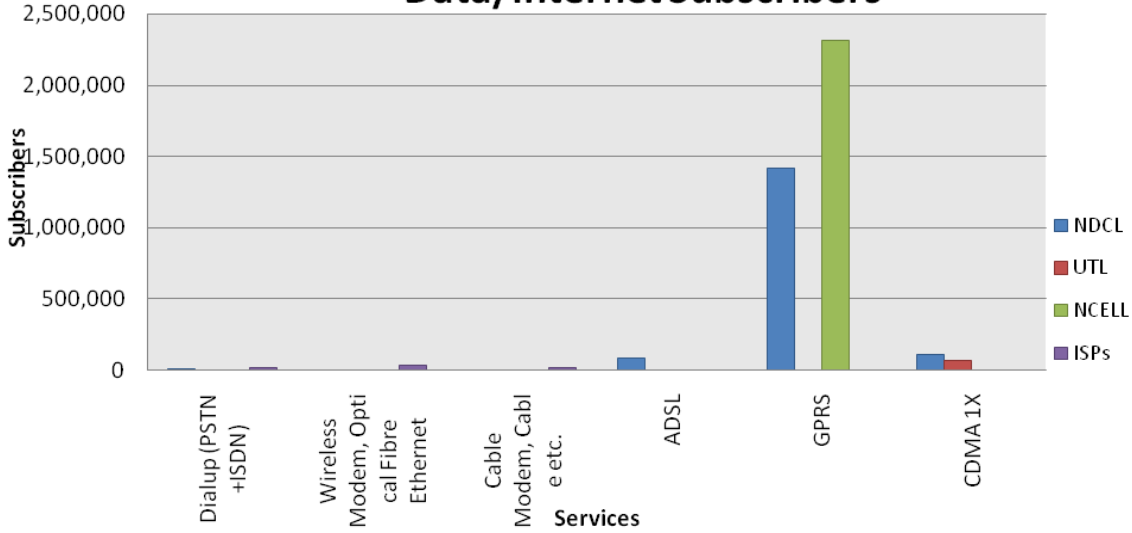
Telephone Penetration Rate



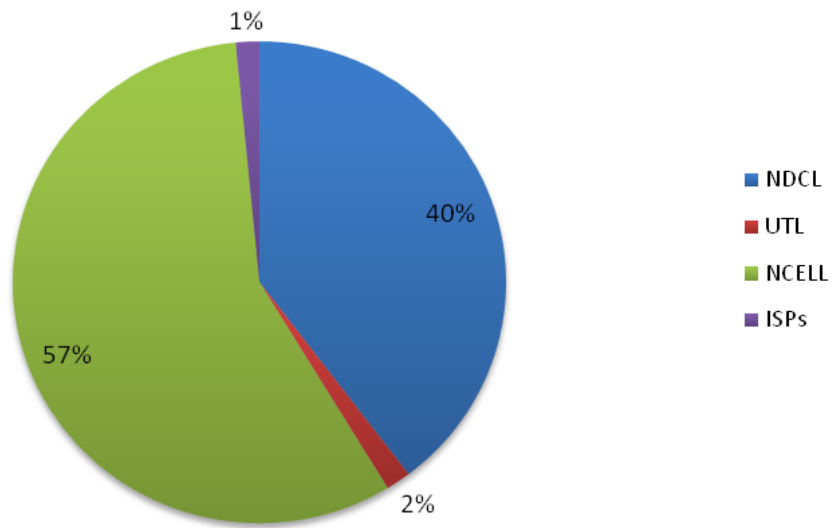
Market Share of Telephone Subscribers



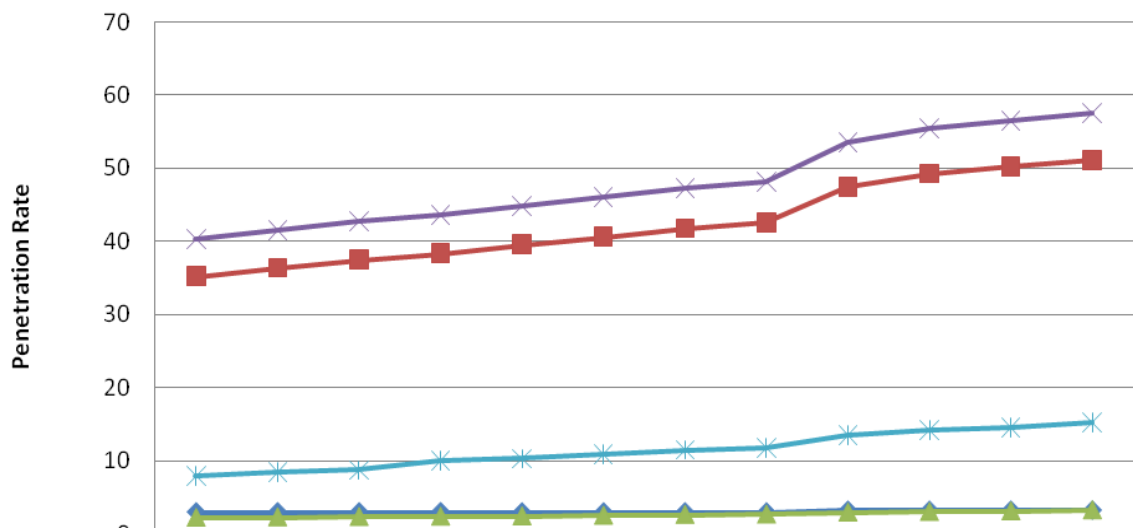
Data/Internet Subscribers



The market share of data/internet subscribers



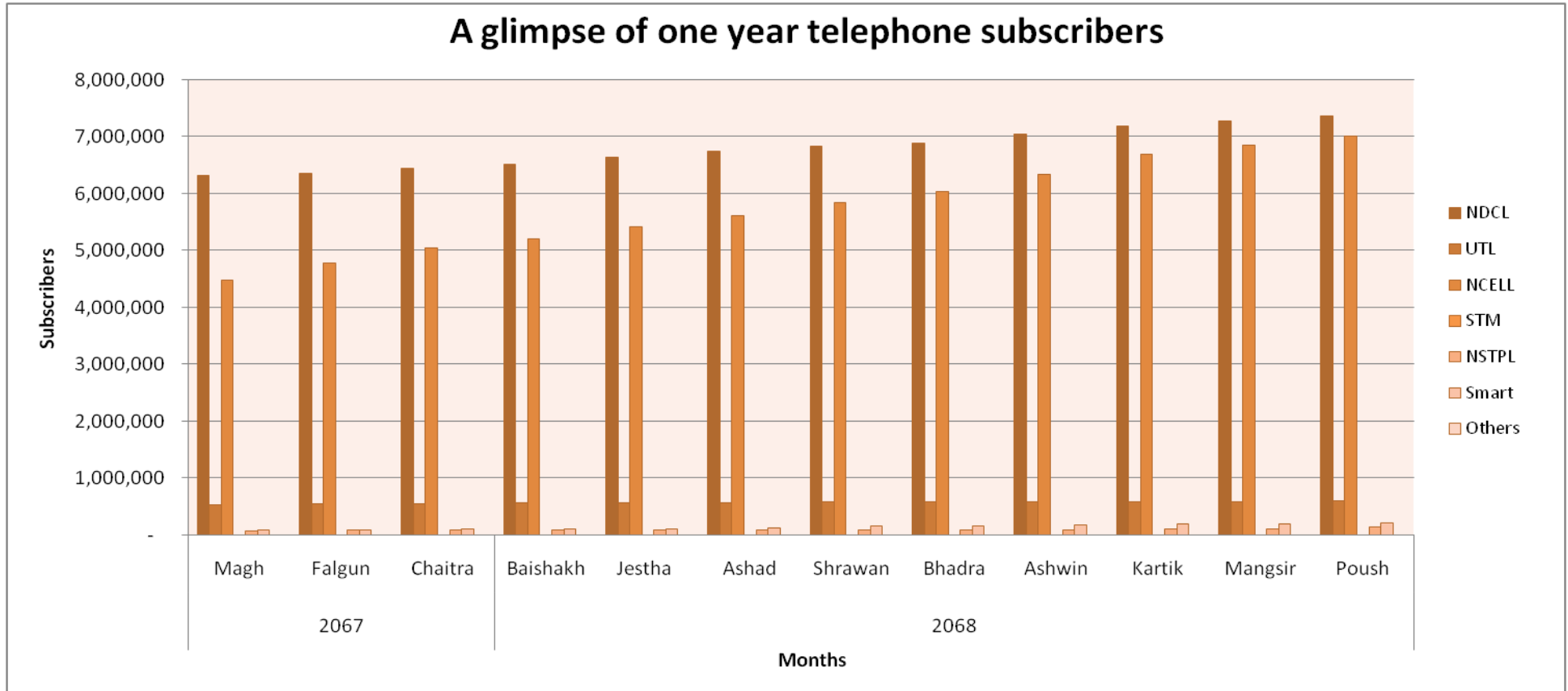
Growth Trend of Voice Telephone and Data Service Penetration



| | Magh | Falgun | Chaitra | Baishak | Jestha | Ashad | Shrawan | Bhadra | Ashwin | Kartik | Mangsir | Poush |
|-----------------|-------|--------|---------|---------|--------|-------|---------|--------|--------|--------|---------|-------|
| ◆ Fixed | 2.95 | 2.95 | 2.96 | 2.96 | 2.93 | 2.93 | 2.94 | 2.94 | 3.16 | 3.17 | 3.17 | 3.18 |
| ■ Mobile | 35.13 | 36.27 | 37.47 | 38.31 | 39.53 | 40.59 | 41.7 | 42.52 | 47.38 | 49.21 | 50.16 | 51.1 |
| ▲ Other | 2.22 | 2.29 | 2.34 | 2.38 | 2.43 | 2.52 | 2.63 | 2.68 | 2.96 | 3.03 | 3.13 | 3.28 |
| ✕ Total | 40.3 | 41.51 | 42.77 | 43.65 | 44.9 | 46.05 | 47.27 | 48.14 | 53.5 | 55.41 | 56.46 | 57.56 |
| * Data/Internet | 7.93 | 8.49 | 8.74 | 10.03 | 10.28 | 10.89 | 11.46 | 11.72 | 13.49 | 14.09 | 14.55 | 15.2 |

A glimpse of one year telephone subscribers

| S.No. | Operators | 2067 | | | 2068 | | | | | | | | |
|-------|-----------|-----------|-----------|-----------|-----------|-----------|-----------|-----------|-----------|-----------|-----------|-----------|-----------|
| | | Magh | Falgun | Chaitra | Baishakh | Jestha | Ashad | Shrawan | Bhadra | Ashwin | Kartik | Mangsir | Poush |
| 1 | NDCL | 6,326,068 | 6,346,808 | 6,439,735 | 6,510,034 | 6,637,070 | 6,743,976 | 6,835,106 | 6,883,557 | 7,046,216 | 7,180,285 | 7,269,105 | 7,364,268 |
| 2 | UTL | 538,833 | 545,854 | 555,986 | 562,797 | 569,142 | 573,629 | 578,435 | 582,106 | 585,170 | 588,307 | 591,511 | 597,324 |
| 3 | NCELL | 4,479,021 | 4,785,715 | 5,036,722 | 5,207,239 | 5,421,414 | 5,619,224 | 5,846,365 | 6,032,938 | 6,334,011 | 6,686,871 | 6,851,561 | 7,008,777 |
| 4 | STM | 5,185 | 5,220 | 5,220 | 5,392 | 5,399 | 5,245 | 5,249 | 5,263 | 5,263 | 5,263 | 5,263 | 5,332 |
| 5 | NSTPL | 77,238 | 86,225 | 86,799 | 85,479 | 89,337 | 91,435 | 93,639 | 95,904 | 97,280 | 98,985 | 111,905 | 136,507 |
| 6 | Smart | 91,469 | 94,572 | 99,556 | 103,988 | 109,229 | 128,398 | 153,138 | 160,953 | 179,136 | 193,064 | 203,040 | 213,228 |
| 7 | Others | 1,742 | 1,742 | 1,742 | 1,742 | 1,742 | 1,742 | 1,742 | 1,742 | 1,742 | 1,742 | 1,742 | 1,742 |



1.4 Licence issued by NTA* (Existing as of Poush, 2068, 14 January, 2012)

| S.No. | Name of the Services | Number of the licensee |
|-------|---------------------------------|------------------------|
| 1. | Basic Telecommunications | 3 |
| 2. | Cellular Mobile | 2 |
| 3. | Network Service Provider | 8 |
| 4. | VSAT User | 83 |
| 5. | Internet (With E-mail) | 46 |
| 6. | GMPCS | 3 |
| 7. | Rural Telecom | 2 |
| 8. | Limited Mobility | 108 |
| 9. | International Trunk Telephone | 3 |
| 10. | Rural VSAT User | 13 |
| 11. | Rural Internet Service Provider | 6 |
| | Total | 277 |

* Year wise licensing activity of NTA is shown in Appendix-1

2. NTA Activities

2.1 Type Approval Certificate

N/A

2.2 Foreign Currency Recommendation : Recommendation for Payment of Bandwidth Cost: NTA, pursuant to section 35 of Telecommunication Act, 1997, recommended to MOIC to avail Foreign Exchange facility to the licensees for the payment of Bandwidth cost to an aggregated amount of NRs. **369,955,124.80** in the month of Poush.

Recommendation for Import of Telecommunications Equipment: During the month of Poush recommendation for the import of Telecommunications equipment amounting to a total of NRs. **169,767,336.80** had been made by NTA.

2.3 License Renewal:

| S. No. | Name of Licensee | Service | Date (mm/dd/yy) |
|--------|----------------------------------|-----------|-----------------|
| 1. | Lumbimi Bank Limited, Biratnagar | VSAT User | 10/24/2068 |

2.5 Human Resource and Capacity Building

a) National Training, Seminar, Study and Observation Tours/Visit:

| S.No. | Program | Date | Place | Participant's Name |
|-------|---|------------------------------|---------|--|
| 1. | To Monitor Astha Network Pvt. Ltd. Dolkha | 2068/9/17 to 2068/9/19 | Dolkha | Bijaya Kumar Roy, Deputy Director Pratima Ghimire, Assistant Director Pradeep Paudyal, Assistant Director |
| 2. | To Inspect CSC's Centers | 2068/9/29 to 2068/10/4 | Lamjung | Santosh Paudel Min Prasad Aryal |

b) International Training, Seminar, Study and Observation Tours/Visit:

| S.No. | Program | Date | Place | Participant's Name |
|--------------|---|------------------------------|--------------|--------------------------------------|
| 1. | APT/SATRC Working Group Meeting | 2068/9/12 to 2068/9/15 | India | Ananda Raj Khanal, Director |
| 2. | Working Group meeting on Network and Services | 2068/9/2 to 2068/9/7 | Iran | Kumar Prasad Sharma, Director |
| 3. | SATRC meeting on Spectrum | 2068/8/25 to 2068/9/3 | Sri Lanka | Min Prasad Aryal, Deputy Director |

3. NTA's Major Decisions during the month of Poush, 2068: N/A

4. List of the members of Nepal Telecommunications Authority

| S.No. | Members Name | Designation | Date of Appointment |
|--------------|---------------------------|--------------------|----------------------------|
| 1. | Mr. Bhesh Raj Kanel | Chairman | 2065/08/08 |
| 2. | Mr Tulsi Bhatta | Member | 2064/04/07 |
| 3. | Mr. Girindra Raj Adhikari | Member | 2065/09/23 |

For Details Contact :

Mr. Arjun Ghimire

Deputy Director

Mr. Sandip Adhikari

Assistant Director

Consumer and Economic Analysis Section

Bluestar Office Complex,

Tripureshwor, Kathmandu

Phone No.: +977-1-4101030-38 (Ext. 243, 224)

Fax No.: +977-1-4101034

E-mail: aghimire@nta.gov.np, sadhikari@nta.gov.np

URL: www.nta.gov.np

NTA Licensing Activity at a glance as of 15 July 2010 (End of Ashad 2067)

| S. No. | Services | Fiscal Year | | | | | | | | | | | | Existing | |
|--------------|--------------------------|-------------|-----------|-----------|-----------|-----------|-----------|-----------|-----------|-----------|-----------|-----------|------------|-----------|-------------------|
| | | Till 056/57 | 057/58 | 058/59 | 059/60 | 060/61 | 061/62 | 062/63 | 063/64 | 064/65 | 065/66 | 066/67 | Total | | License Cancelled |
| 1 | Basic Telecommunication | 0 | 1 | 0 | 1 | 0 | 0 | 0 | 0 | 1 | 0 | 0 | 3 | 0 | 3 |
| 2 | GSM Mobile | 1 | 0 | 0 | 0 | 0 | 1 | 0 | 0 | 0 | 0 | 0 | 2 | 0 | 2 |
| 3 | Network Service Provider | 6 | 1 | 3 | 0 | 1 | 0 | 0 | 2 | 1 | 0 | 1 | 15 | 7 | 8 |
| 4 | VSAT User | 16 | 8 | 11 | 15 | 20 | 6 | 41 | 7 | 0 | 6 | 22 | 152 | 54 | 98 |
| 5 | Internet (with e-mail) | 13 | 2 | 3 | 2 | 6 | 6 | 7 | 3 | 3 | 7 | 12 | 64 | 20 | 44 |
| 6 | Radio Paging | 6 | 2 | 0 | 0 | 0 | 0 | 0 | 0 | 0 | 0 | 0 | 8 | 8 | 0 |
| 7 | Fax Mail | 4 | 2 | 0 | 0 | 0 | 0 | 0 | 0 | 0 | 0 | 0 | 6 | 6 | 0 |
| 8 | Video Conferencing | 1 | 0 | 0 | 0 | 0 | 0 | 0 | 0 | 0 | 0 | 0 | 1 | 1 | 0 |
| 9 | GMPCS | 0 | 0 | 0 | 2 | 0 | 0 | 0 | 1 | 0 | 0 | 0 | 3 | 0 | 3 |
| 10 | Rural Telecom | 0 | 0 | 0 | 0 | 1 | 0 | 0 | 0 | 1 | 0 | 0 | 2 | 0 | 2 |
| 11 | Limited Mobility | 0 | 0 | 0 | 0 | 0 | 0 | 2 | 4 | 4 | 3 | 35 | 48 | 0 | 48 |
| 12 | Int. Trunk Telephone | 0 | 0 | 0 | 0 | 0 | 0 | 0 | 0 | 2 | 0 | 0 | 2 | 0 | 2 |
| 13 | Rural VSAT User | 0 | 0 | 0 | 0 | 0 | 0 | 0 | 0 | 1 | 2 | 5 | 8 | 0 | 8 |
| 14 | Rural ISP | 0 | 0 | 0 | 0 | 0 | 0 | 0 | 0 | 0 | 1 | 5 | 6 | 0 | 6 |
| Total | | 47 | 16 | 17 | 20 | 28 | 13 | 50 | 17 | 13 | 19 | 80 | 320 | 96 | 224 |

Source: NTA License Section

A Glimpse of Subscriber's of Internet Service as on Poush, 2068

| S.No. | Company Name | Dialup (PSTN +ISDN) | Wireless Modem, Optical Fiber Ethernet | Cable Modem, Cable etc. | Total |
|-------|--|---------------------|--|-------------------------|---------------|
| 1 | STM Telecom Sanchar Pvt.Ltd., Baluwatar, Kathmandu* | - | 121 | - | 121 |
| 2 | Sustainable Network Pvt.Ltd. Pulchok, Lalitpur | - | 105 | - | 105 |
| 3 | Cherry World Communication P.Ltd., New Baneshwor, Kathmandu* | - | 162 | 18 | 180 |
| 4 | Subisu Cablenet Pvt. Ltd. Baluwatar, Kathmandu* | - | 1,234 | 5,418 | 6,652 |
| 5 | Fiber Online Pvt. Ltd., Jawalakhel, Lalitpur* | - | - | 474 | 474 |
| 6 | Everest Net (Pvt) Ltd. Jawalakhel, Lalitpur* | 1,370 | - | - | 1,370 |
| 7 | Namche Networks Pvt. Ltd.* | - | 20 | 6 | 26 |
| 8 | Pokhara Internet Pvt. Ltd., Pokhara, Kaski* | - | - | 15 | 15 |
| 9 | Broadlink Network & Communication Pvt.Ltd., Kathmandu* | - | 18,623 | - | 18,623 |
| 10 | WorldLink Communications (Pvt.) Ltd. Jawalakhel, Lalitpur* | 3,495 | 7,605 | 8,350 | 19,450 |
| 11 | Surfin Pvt.Ltd., Putalisadak, Kathmandu* | - | 34 | - | 34 |
| 12 | Iplus Pvt. Ltd, Lazimpat* | - | - | 76 | 76 |
| 13 | Classic Tech Pvt. Ltd., Baneshwor, Kathmandu | - | 407 | 33 | 440 |
| 14 | Square Networks Pvt. Ltd.* | - | 15 | 3 | 18 |
| 15 | Mitra Networkr Pvt.Ltd. Manbhawan, Lalitpur* | - | 10 | 65 | 75 |
| 16 | Japan Nepal Information Communication Technology, Kalikasthan* | 152 | - | - | 152 |
| 17 | Himalayan Online Services (Pvt) Ltd. DurbarMarg, Kathmandu* | - | 266 | 653 | 919 |
| 18 | Vianet communicatuins Pvt. Ltd., Sidhibhawan, Kathmandu | 400 | 523 | 235 | 1,158 |
| 19 | Eastlink Technology Pvt. Ltd., Tripureshwor, Kathmandu* | - | 127 | 23 | 150 |
| 20 | Health Net Nepal, Jaya Bageswori, Kathmandu* | - | - | 24 | 24 |
| 21 | Mercantile Communication (Pvt). Ltd. DurbarMarg, Kathmandu* | 8,725 | 385 | 395 | 9,505 |
| 22 | Allied Net Link Technologies Pvt. Ltd., Marajgunj, Kathmandu* | - | 57 | - | 57 |
| 23 | Satelink Nepal Pvt.Ltd., Maharajgunj, Kathmandu* | - | 19 | 70 | 89 |
| 24 | Net Max Technologies P. Ltd, Anamnagar, Kathmandu* | - | 62 | 43 | 105 |

| | | | | | |
|--------------|---|---------------|---------------|---------------|---------------|
| 25 | Zentech International | - | 139 | - | 139 |
| 26 | Eastern Networks Pvt. Ltd., Naxal, Kathmandu | - | - | 206 | 206 |
| 27 | Web Surfer Nepal Company. System Pvt. Ltd. Naxal, Kathmandu | 46 | 1196 | 733 | 1,975 |
| 28 | Radius Communication Pvt.Ltd., Putalisadak, Kathmandu* | - | - | 136 | 136 |
| 29 | Netplus Technology Pvt.Ltd* | - | 36 | 136 | 172 |
| Total | | 14,188 | 31,146 | 17,112 | 62,446 |

* Those ISPs' who don't submit the data for the month of Poush.